



Erosion Gone Viral – The 2024 Jupiter Inlet Colony Emergency Response Effort

38th National Conference on Beach Preservation Technology

February 20, 2024

Geosyntec[®]
consultants

ATM
A Geosyntec Company



Michael G. Jenkins, Ph.D., P.E. Senior Principal

About a year ago.....

Geosyntec[®]
consultants

ATM
A Geosyntec Company

Q SEARCH

FOX WEATHER

The FOX Weather App
LEARN MORE



[Watch Live](#) [Weather News](#) [How to Watch](#) [Extreme Weather](#) [Learn](#) [Local Weather](#) [Earth & Space](#) [Lifestyle](#) [Video](#) [America's Weather Team](#) [Podcast](#)

Drone video shows massive chunks of South Florida backyards swept into ocean

Palm Beach C



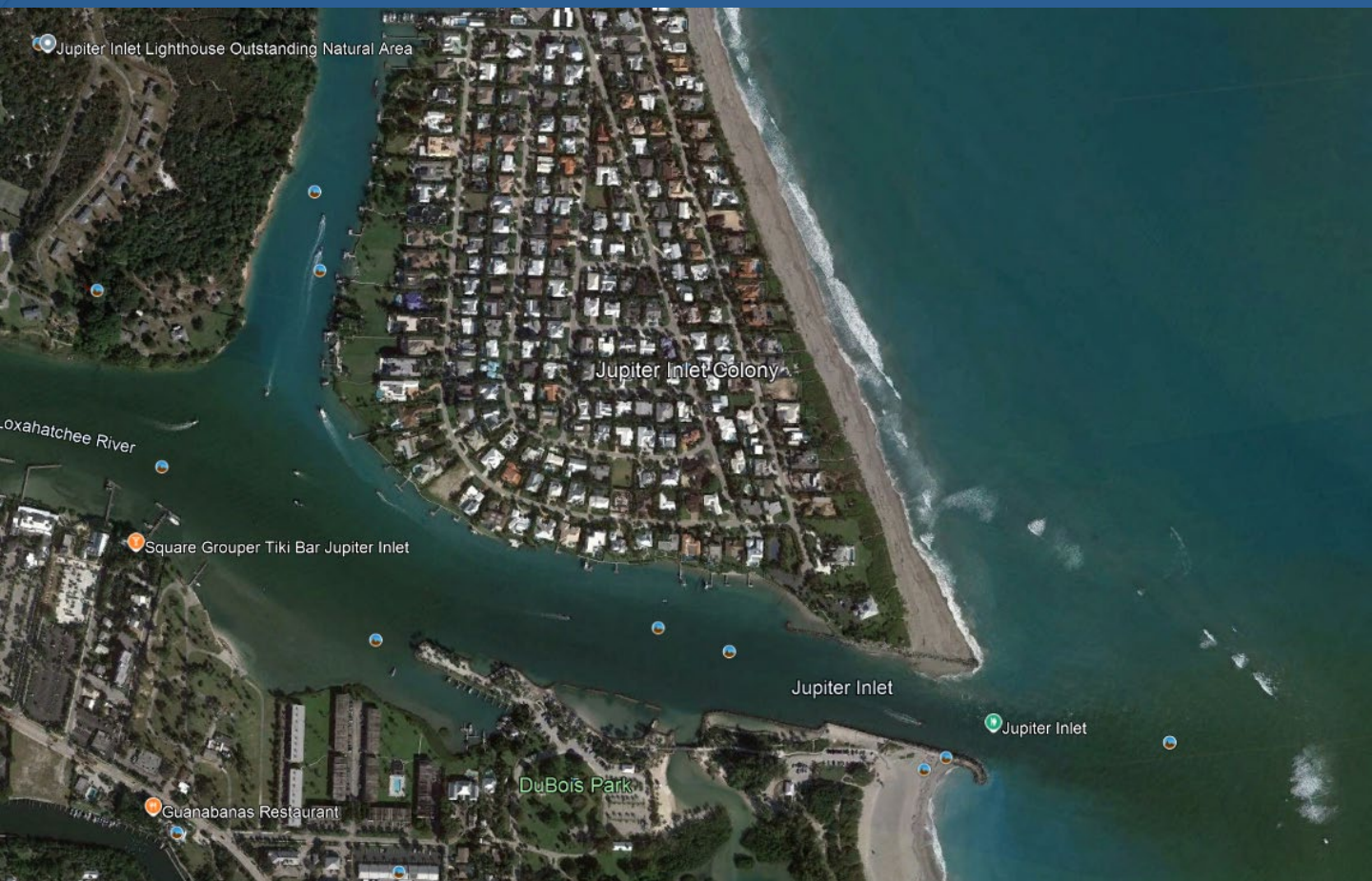
erosion has



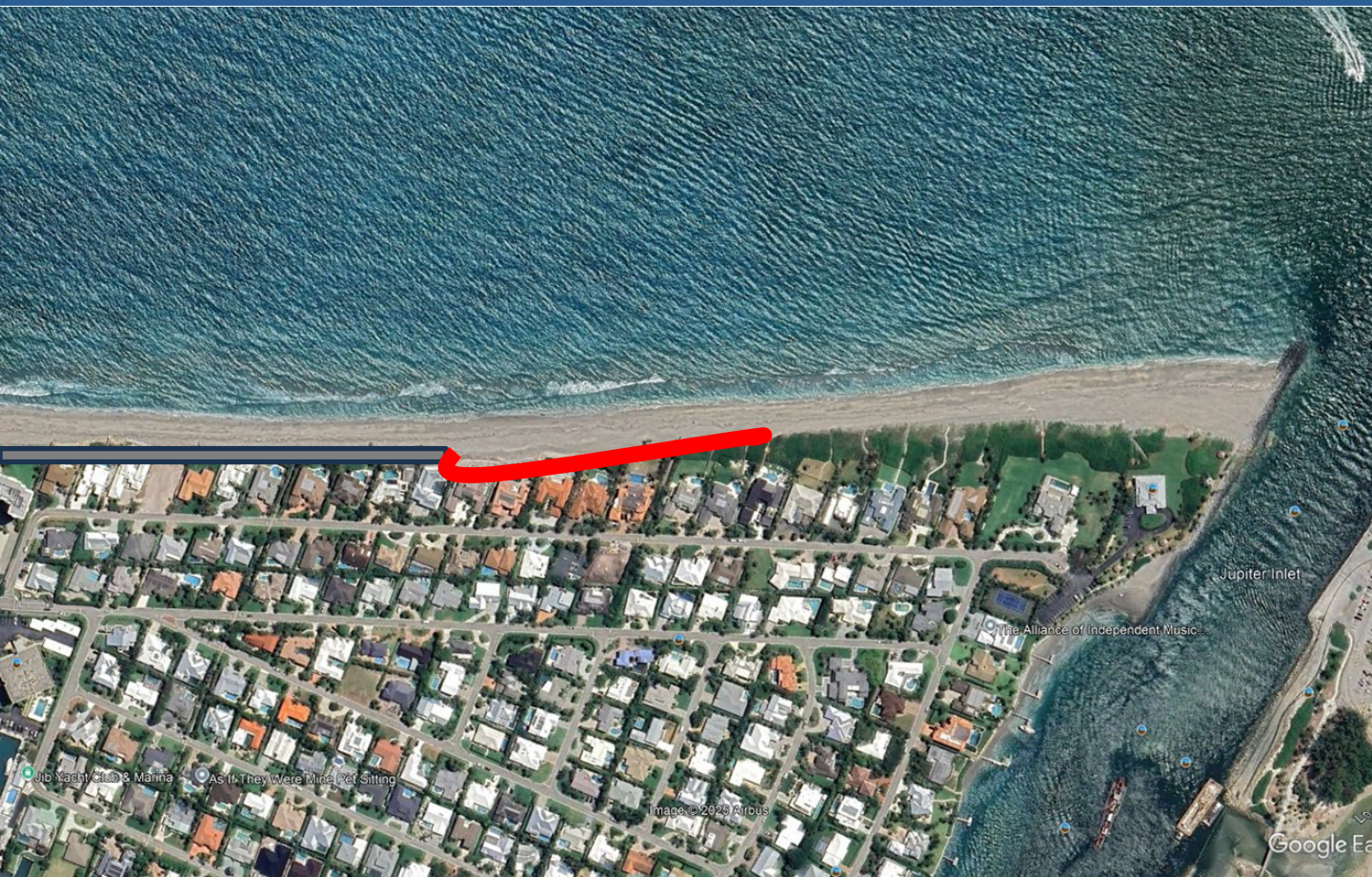
So What the heck was going on?

Geosyntec[®]
consultants

ATM
A Geosyntec Company



So What the heck was going on?



The Result

Geosyntec[®]
consultants

ATM
A Geosyntec Company



The Result

Geosyntec[®]
consultants

ATM
A Geosyntec Company



- **Properties are not eligible for armoring**
- **Upper beach placement is the only immediate, viable option**
- **If something is going to be done it is going to have to happen quickly**



- **State Emergency Order in Place**
- **Town of Jupiter Inlet Colony**
- **Contractor: Eastman Aggregates**
- **Access: Jupiter Inlet Colony Beach Club**
- **Turtle Monitoring: Loggerhead Marine Life Center**
- **DEP/FWCC**





Erosion Event: February 7, 2024

Beginning of Sand Placement: February 18, 2024

Project Completion: February 28, 2024



January 2025 ~ 1 Year Post



In Conclusion

1. **Weird things can happen in El-Nino Years**
2. **Emergency options in the coastal zone are limited**
3. **Sometimes you have to be the one to take the heat for #2**
4. **You can do amazing things when you have talented folks around you**





Erosion Gone Viral – The 2024 Jupiter Inlet Colony Emergency Response Effort

38th National Conference on Beach Preservation Technology

February 20, 2024

Geosyntec[®]
consultants

ATM
A Geosyntec Company

Michael G. Jenkins, Ph.D., P.E. Senior Principal

